

NEW BRAUNFELS ISD



NOVEMBER 3, 2015

Community Presentation

NBISD THROUGH THE YEARS

- Educating youth for more than 100 years
- Evolved from a small schoolhouse to 12 campuses
- Service more than 8,400 students
- More than 1,000 employees
- Last bond election in 2010 for \$45 million



Enrollment Growth

- Currently 4 elementary schools over capacity
- Estimated 5 out of 8 over capacity this fall
- Grown by 2,000 students in past decade
- Projections show district will nearly double in size in next 10 years
- Projected student enrollment at build-out will be nearly 20,000



Bond Planning

- Board formed Facility Planning Committee
- 28 members – made up of employees, parents and community members
- Committee met November 2014-May 2015
- Made recommendation to Board in May 2015
- Board called bond on July 27, 2015



Bond Recommendation

- Projects totaling estimated \$62.8 million
 - NEW BUILD: Includes two (2) new elementary schools for growth
 - UPGRADES & RENOVATIONS: Projects to address facility, safety and compliance needs of existing facilities

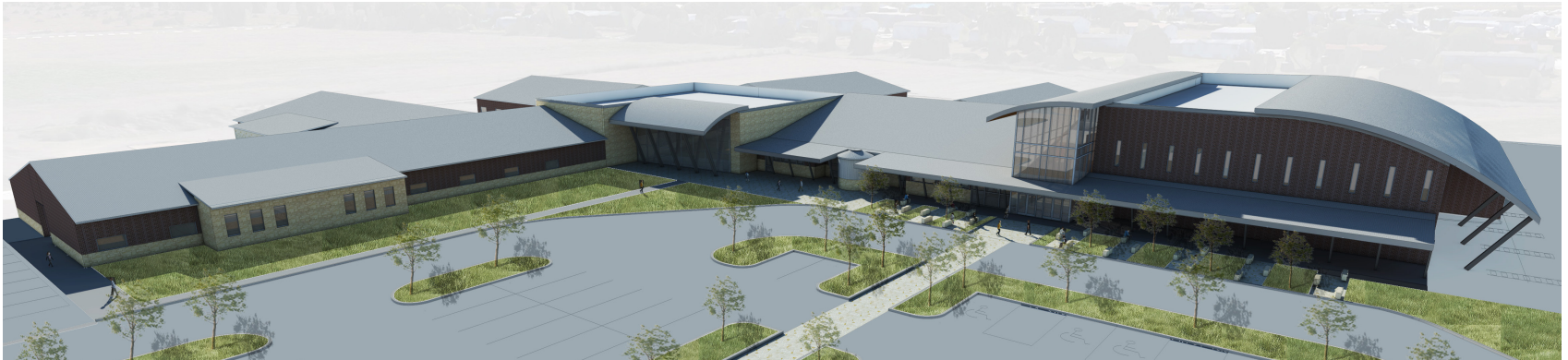


New Elementary Schools

- One elementary on east side of IH-35 in Voss Farms subdivision off County Line Road
- One elementary on west side outside of Loop 337 at the end of Oak Run Parkway adjacent to the Oak Run subdivision
- Total cost = \$47.5 million plus \$2 million to extend roadways and utilities to site



New Elementary Schools - *continued*



- Will use floor plan from Klein Road to design new schools
- New schools projected to open in August 2017
- Built for 725-750 students in grades K-5
- 80 percent of bond program is for these two schools

Conversion of Lone Star Elementary School into Early Childhood Center

- Estimated Cost = \$1,320,000
- Site will service all of NBISD's pre-kinder students at one campus
- Consolidate services from Klein Road and County Line with Lone Star Elementary
- Lone Star capacity is 370 students
- Currently have 240 pre-kinder students



Renovations to NBHS

- Estimated Cost = \$5 million
- Upgrades to front of building, restroom facilities and exterior doors
- Replacement of the building's roof
- Some parts of the facility are 51 years old



Renovations to Unicorn Stadium

- Estimated Cost = \$5.6 million
- Replacement of visitor's seating
- Replacement of restroom facilities and ticket booths
- Replacement or renovations of concession buildings
- Address code and safety requirements



Cafeteria Flooring & Roofing

- Flooring Estimated Cost = \$55,000
 - Replacement of cafeteria flooring at County Line, Walnut Springs and Memorial Elementary Schools
- Roofing Estimated Cost = \$121,000
 - New roof at Disciplinary Alternative Education Program Building (DAEP)



Furniture Upgrades for 4th & 5th Grade

- Estimated Cost = \$1.1 million
- Replace 4th and 5th grade classroom furniture at all eight (8) elementary campuses
- Furniture has modern and ergonomic design



Furniture Upgrades for 4th & 5th Grade

- Estimated Cost = \$1.1 million
- Replace 4th and 5th grade classroom furniture at all eight (8) elementary campuses
- Furniture has modern and ergonomic design



Cost to Taxpayers

- Estimated 0 cents up to 1 ½ cent tax impact per \$100 valuation
- Average home value of \$200,000 would pay \$0 to \$30 more a year
- RESIDENTS 65 YEARS OF AGE OR OLDER WOULD NOT SEE TAX INCREASE



Voting Information

Last Day to Register to Vote

October 5, 2015

First Day of Early Voting

October 19, 2015

Last Day of Early Voting

October 30, 2015

Election Day

November 3, 2015



NEW BRAUNFELS ISD



NOVEMBER 3, 2015

FOR MORE INFORMATION

VISIT WWW.NBISD.ORG

EMAIL: INFO@NBISD.ORG

CALL 830-629-8540