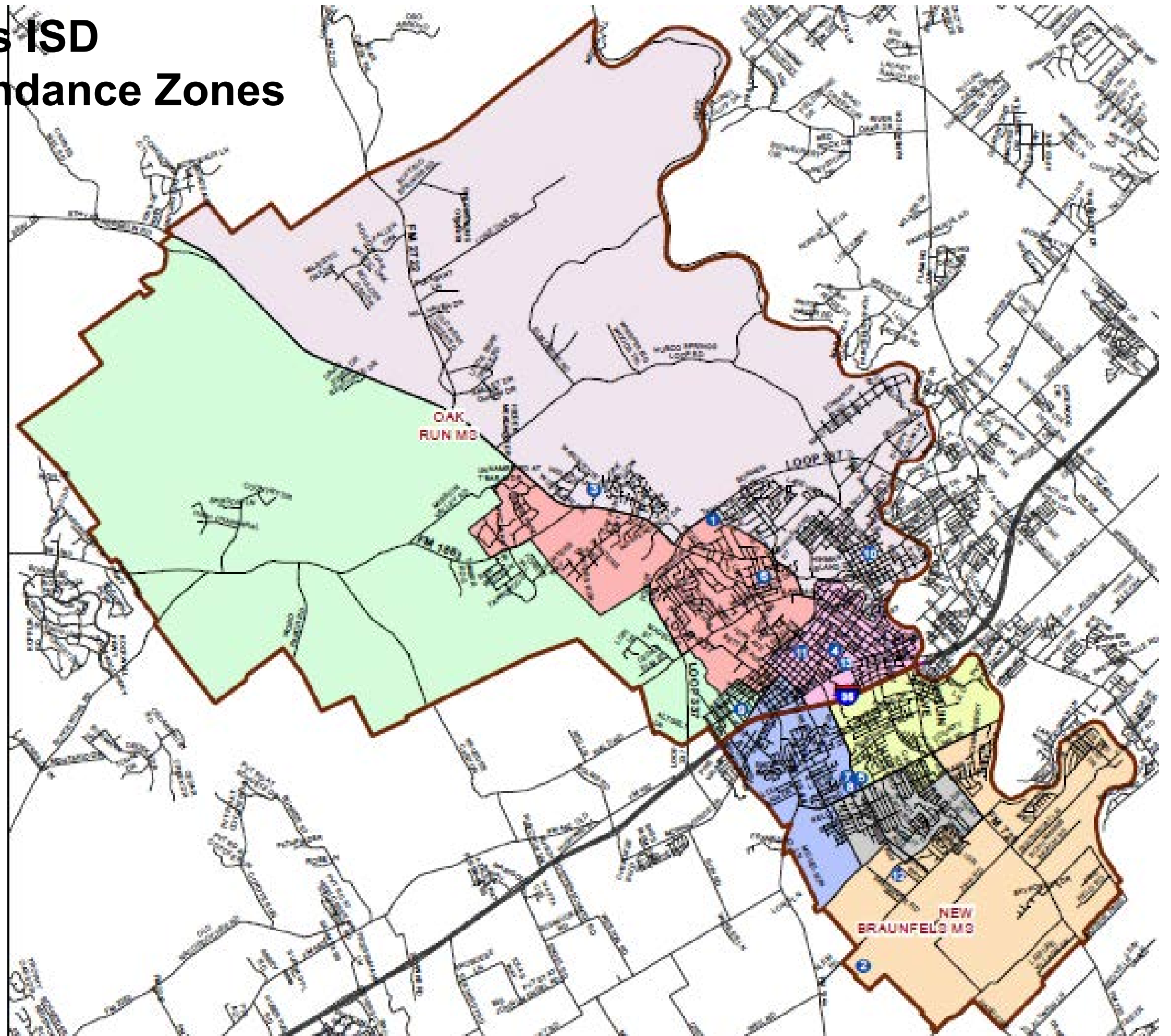


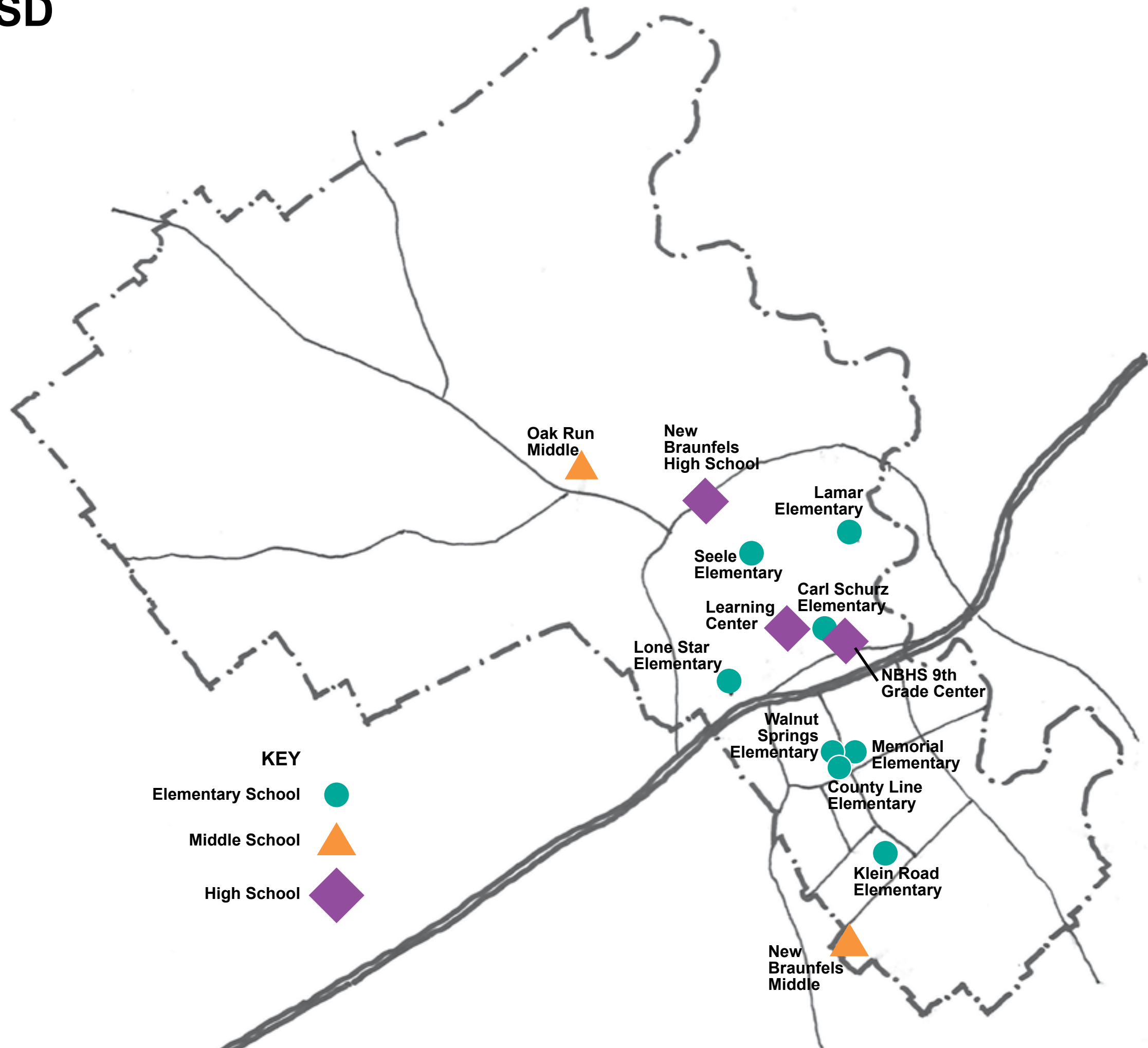


New Braunfels ISD Schools, Attendance Zones





New Braunfels ISD District Schools





Forecasts A + B Capacity vs Enrollment

Elementary Schools PK-5

School	Permanent Capacity	Years											
		2013/14	2014/15 Current	2015/16	2016/17	2017/18	2018/19	2019/20	2020/21	2021/22	2022/23	2023/24	2004/25
A Elem. Schools PK-5													
A Carl Schurz Elementary	500	500	500	500	500	500	500	500	500	500	500	500	500
Projected Enroll.		532	575	593	602	596	600	580	582	586	591	591	589
Cap-Enroll.		-32	-75	-93	-102	-96	-100	-80	-82	-86	-91	-91	-89
A Lamar Elementary	500	500	500	500	500	500	500	500	500	500	500	500	500
Projected Enroll.		484	469	480	486	520	579	629	701	784	866	946	1030
Cap-Enroll.		16	31	20	14	-20	-79	-129	-201	-284	-366	-446	-530
A Lone Star Elementary	370	370	370	370	370	370	370	370	370	370	370	370	370
Projected Enroll.		307	347	359	366	375	388	398	418	437	465	489	510
Cap-Enroll.		63	23	11	4	-5	-18	-28	-48	-67	-95	-119	-140
A Seele Elementary	450	450	450	450	450	450	450	450	450	450	450	450	450
Projected Enroll.		480	435	408	416	436	423	417	420	429	431	436	438
Cap-Enroll.		-30	15	42	34	14	27	33	30	21	19	14	12
Total Capacity	1820	1820	1820	1820	1820	1820	1820	1820	1820	1820	1820	1820	1820
Total Projected Enrollment		1803	1826	1840	1870	1927	1990	2024	2121	2236	2353	2462	2567
Capacity less Enrollment		17	-6	-20	-50	-107	-170	-204	-301	-416	-533	-642	-747
B Elem. Schools PK-5													
B County Line Elementary	525	525	525	525	525	525	525	525	525	525	525	525	525
Projected Enroll.		583	615	621	658	659	688	702	704	720	745	761	782
Cap-Enroll.		-58	-90	-96	-133	-134	-163	-177	-179	-195	-220	-236	-257
B Walnut Springs Elementary	500	500	500	500	500	500	500	500	500	500	500	500	500
Projected Enroll.		499	510	514	510	506	508	503	524	538	566	599	634
Cap-Enroll.		1	-10	-14	-10	-6	-8	-3	-24	-38	-66	-99	-134
B Memorial Elementary	458	458	458	458	458	458	458	458	458	458	458	458	458
Projected Enroll.		408	432	462	464	468	477	499	514	531	538	558	576
Cap-Enroll.		50	26	-4	-6	-10	-19	-41	-56	-73	-80	-100	-118
B Klein Road Elementary	725	725	725	725	725	725	725	725	725	725	725	725	725
Projected Enroll.		697	734	787	866	899	997	1076	1148	1217	1297	1392	1491
Cap-Enroll.		28	-9	-62	-141	-174	-272	-351	-423	-492	-572	-667	-766
Total Capacity	2208	2208	2208	2208	2208	2208	2208	2208	2208	2208	2208	2208	2208
Total Projected Enrollment		2187	2291	2384	2498	2532	2670	2780	2890	3006	3146	3310	3483
Capacity less Enrollment		21	-83	-176	-290	-324	-462	-572	-682	-798	-938	-1102	-1275
A + B Elem. Schools													
Total Capacity	4028	4028	4028	4028	4028	4028	4028	4028	4028	4028	4028	4028	4028
Total Projected Enrollment		3990	4117	4224	4368	4459	4660	4804	5011	5242	5499	5772	6050
Capacity less Enrollment		38	-89	-196	-340	-431	-632	-776	-983	-1214	-1471	-1744	-2022



Forecast A + B

Capacity vs Enrollment

Middle (6-8)

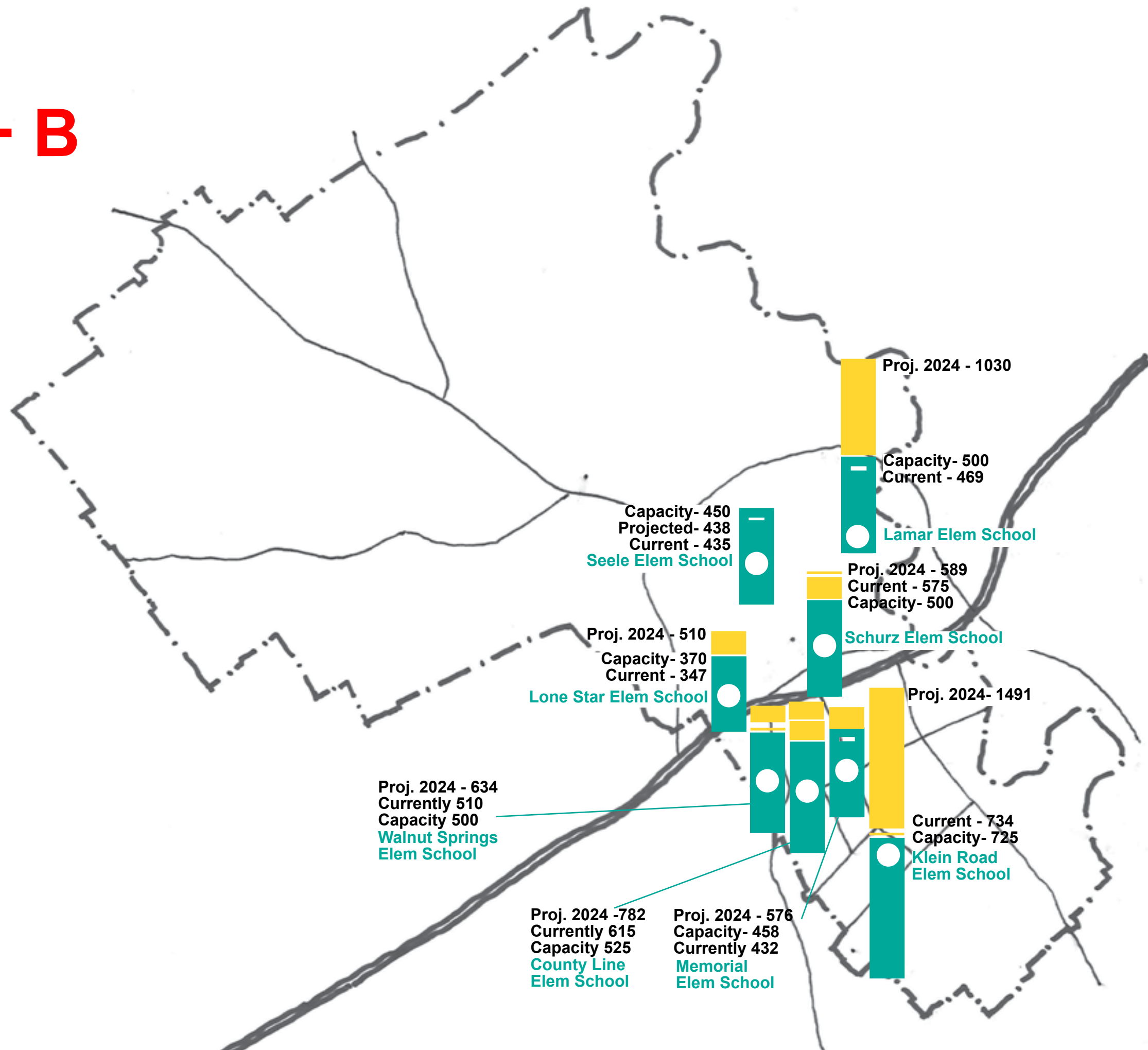
High (9-12) Schools

District Totals

School	Permanent Capacity	Years												
		2013/14	2014/15	2015/16	2016/17	2017/18	2018/19	2019/20	2020/21	2021/22	2022/23	2023/24	2004/25	
Middle Schools 6-8														
A Oak Run Middle	1200	1200	1200	1200	1200	1200	1200	1200	1200	1200	1200	1200	1200	1200
Projected Enroll.		955	972	1014	1005	966	1042	1190	1258	1212	1121	1151	1233	
Cap-Enroll.		245	228	186	195	234	158	10	-58	-12	79	49	-33	
B New Braunfels Middle	1270	1270	1270	1270	1270	1270	1270	1270	1270	1270	1270	1270	1270	
Projected Enroll.		992	969	1056	1109	1224	1251	1325	1352	1460	1532	1575	1630	
Cap-Enroll.		278	301	214	161	46	19	-55	-82	-190	-262	-305	-360	
Total Capacity	2470	2470	2470	2470	2470	2470	2470	2470	2470	2470	2470	2470	2470	
Total Projected Enrollment		1947	1941	2070	2114	2190	2293	2515	2610	2672	2653	2726	2863	
Capacity less Enrollment		523	529	400	356	280	177	-45	-140	-202	-183	-256	-393	
High Schools 9 -12														
B 9th Grade Center	1024	1024	1024	1024	1024	1024	1024	1024	1024	1024	1024	1024	1024	
Projected Enroll.		621	678	639	712	758	807	817	939	940	1063	1010	1024	
Cap-Enroll.		403	346	385	312	266	217	207	85	84	-39	14	0	
B New Braunfels High School	2000	2000	2000	2000	2000	2000	2000	2000	2000	2000	2000	2000	2000	
Projected Enroll.		1687	1705	1767	1814	1906	2026	2178	2260	2468	2677	3010	3134	
Cap-Enroll.		313	295	233	186	94	-26	-178	-260	-468	-677	-1010	-1134	
B Learning Center	80	80	80	80	80	80	80	80	80	80	80	80	80	
Projected Enroll.		54	45	48	46	44	43	42	40	39	38	37	36	
Cap-Enroll.		26	35	32	34	36	37	38	40	41	42	43	44	
Total Capacity	3104	3104	3104	3104	3104	3104	3104	3104	3104	3104	3104	3104	3104	
Total Projected Enrollment		2362	2428	2454	2572	2708	2876	3037	3239	3447	3778	4057	4194	
Capacity less Enrollment		742	676	650	532	396	228	67	-135	-343	-674	-953	-1090	
District Total														
Total Capacity	9602	9602	9602	9602	9602	9602	9602	9602	9602	9602	9602	9602	9602	
Total Projected Enrollment		8299	8486	8748	9054	9357	9829	10356	10860	11361	11930	12555	13107	
Capacity less Enrollment		1303	1116	854	548	245	-227	-754	-1258	-1759	-2328	-2953	-3505	



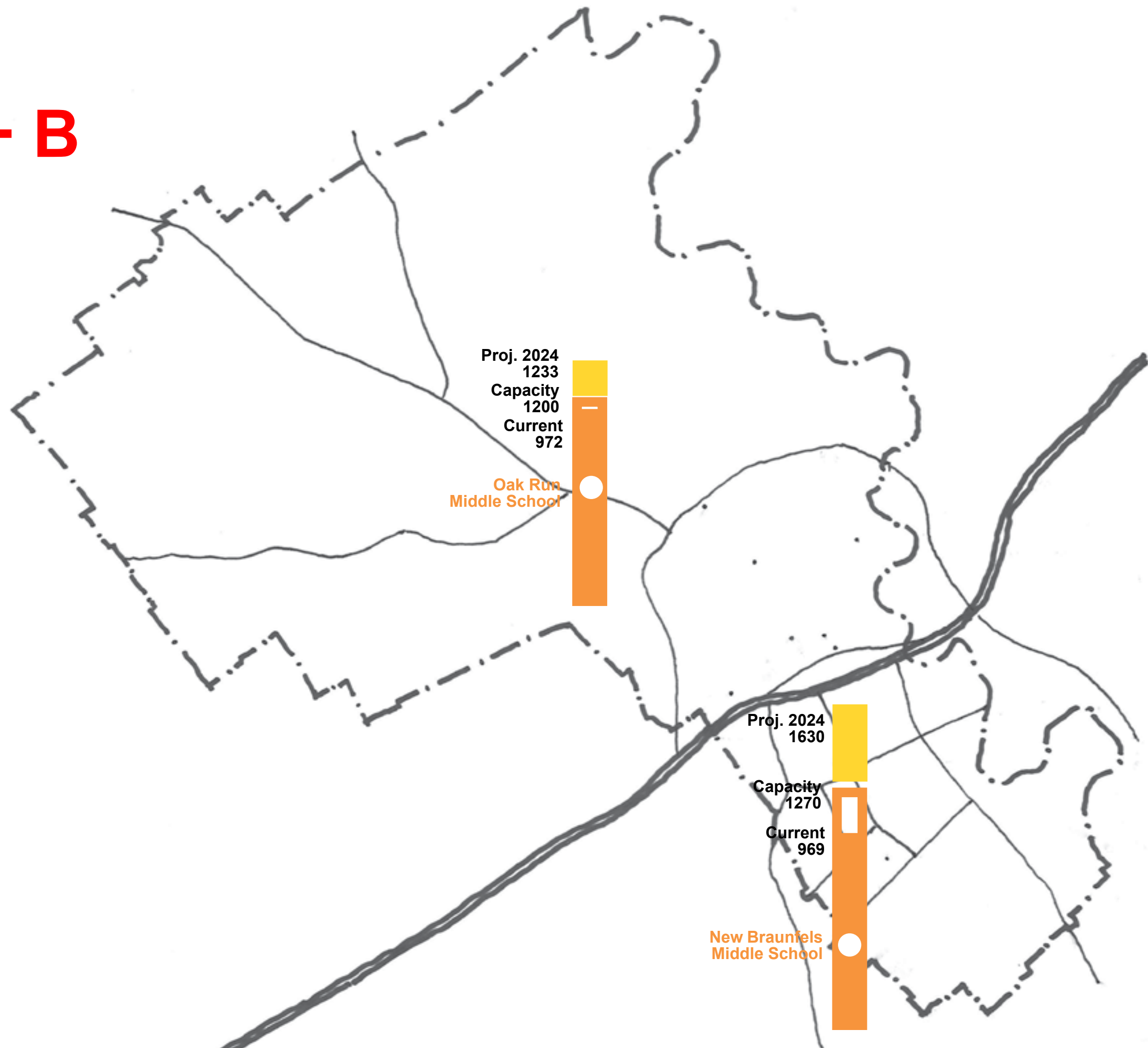
Ten Year Forecast **A + B** Elementary Schools





Ten Year Forecast **A + B**

Middle Schools





Ten Year Forecast **A + B** High Schools

