



NBISD Weekly Parent Update

July 22, 2020

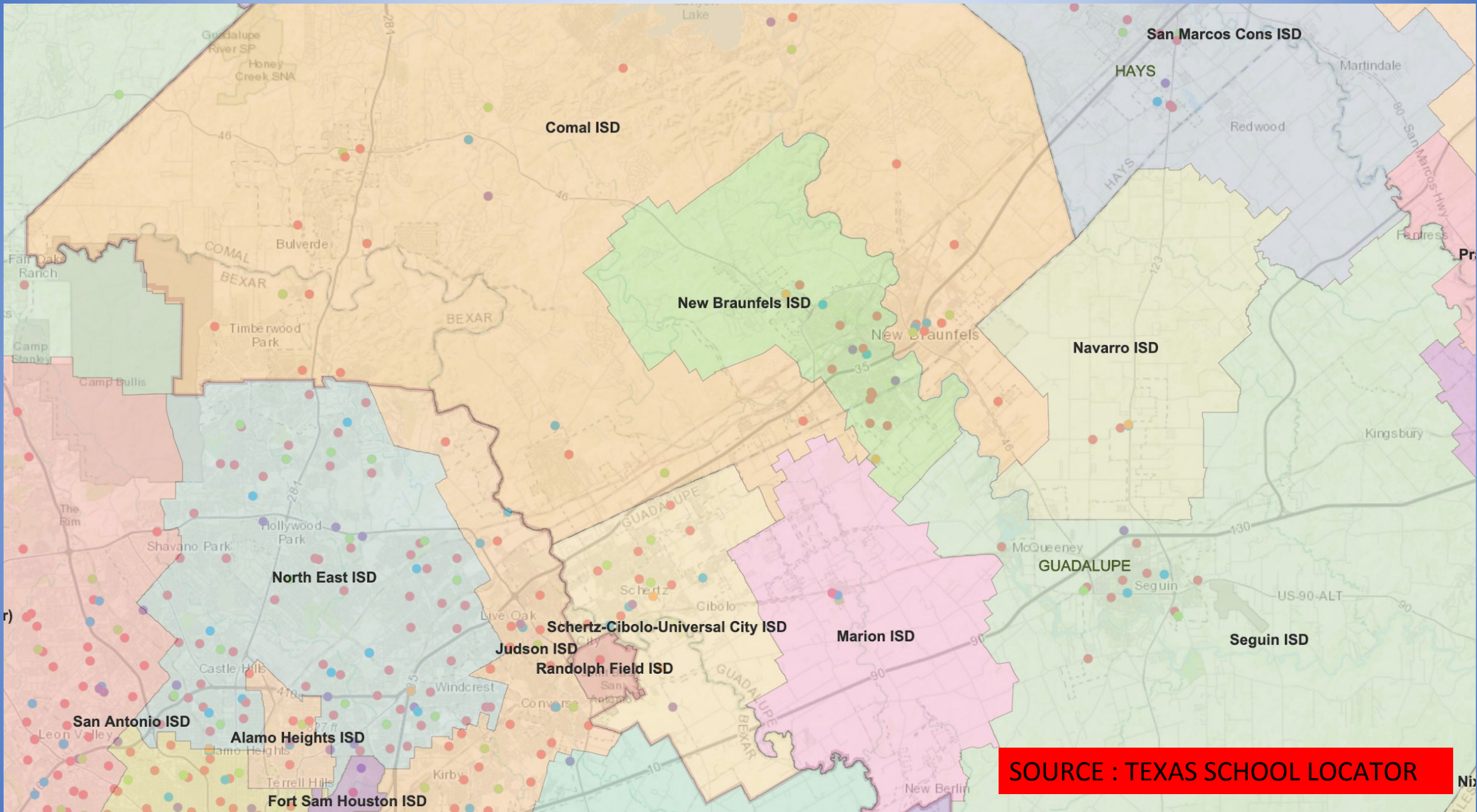
Presented by: NBISD Superintendent Randy Moczygemba

Updates from Texas Education Agency

- School start dates are a local Board Decision
 - NBISD will follow the original Calendar approved by the board for 2020-21
 - NBISD start date will be August 24.
- TEA has announced that all school districts **MAY CHOOSE** to start REMOTE ONLY for all students for up to 4 weeks
- School Districts **MAY CHOOSE** to increase the REMOTE ONLY option for all students for up to four additional weeks (8 total) by vote of the board to submit a waiver to the Texas Education Agency
- On Friday, July 17, the Texas Commissioner of Education informed School Districts that we **ARE SUBJECT** to “Stay Home” orders, if they are issued by the State or County.

Updates from Texas Education Agency

- Subject to a County closure, the campuses in that County only would be required to do REMOTE ONLY instruction
- New Braunfels ISD has campuses in Comal and Guadalupe Counties
 - New Braunfels Middle School, Voss Farms Elementary and Klein Road Elementary are in Guadalupe County
 - The remaining campuses are in Comal County
 - There are no orders currently in effect for the State, Comal County or Guadalupe County
- Bexar County and Hays County **HAVE ISSUED** REMOTE ONLY orders.
- Comal ISD has Five Campuses in Bexar County – They are REMOTE only



SOURCE : TEXAS SCHOOL LOCATOR

NBISD Road Map to Reopening Plan

- The NBISD Board of Trustees met on Monday, July 20 to discuss Safety and Security items related to reopening schools on August 24.
- The NBISD Board will hold weekly Board Meetings on Tuesdays beginning Tuesday, July 28, at 6:00pm until further notice as we work to make the decisions necessary for a Safe Start to the 2020-21 school year.
- We hope to make a decision on our plan for the start of school on August 24 at the board meeting next Tuesday – REMOTE ONLY for all students or choice of REMOTE or ON-CAMPUS.
- We are also working diligently on our REOPENING PLAN which will be posted on our ROADMAP to REOPENING website. This plan is **REQUIRED** by TEA to be up by August 20. We hope to have it much sooner.

Extracurricular Activities

- UIL Major Announcements – July 21, 2020
 - Updates available on their website - <https://www.uiltexas.org/policy/covid-19>
 - Moved the start of work out and game dates for team tennis, cross country, volleyball, and football - (see chart next slide)
 - Students participating in REMOTE ONLY learning may participate in UIL activities if they meet all other eligibility requirements
 - Students can only participate in activities at the school in which they are enrolled in REMOTE instruction
 - TEA allows school districts to decide if students in REMOTE learning can participate in Extracurricular Activities – (all or none)
 - NBISD will allow students who are in REMOTE instruction only to participate in all extracurricular activities unless there is a scheduling conflict

Extracurricular Activities

ATHLETICS					
Activity	1 st Day for Practice	1 st Day for Games / Matches / Meets	District Certification Deadline	State Championships	
CONFERENCES 1A-4A					
Team Tennis	**	August 17, 2020	October 24, 2020	November 11-12, 2020	
Cross Country	**	August 17, 2020	November 14, 2020	December 5, 2020	
Volleyball	August 3, 2020	August 10, 2020	October 27, 2020	November 18-21, 2020	
Football	August 3, 2020	August 27, 2020	November 7, 2020	December 16-19, 2020	
CONFERENCES 5A-6A					
Team Tennis	**	September 7, 2020	October 24, 2020	November 11-12, 2020	
Cross Country	**	September 7, 2020	November 14, 2020	December 5, 2020	
Volleyball	September 7, 2020	September 14, 2020	November 17, 2020	December 11-12, 2020	
Football	September 7, 2020	September 24, 2020	December 5, 2020	January 2021, TBD	
MUSIC					
Activity	1 st Day to Begin Contest Show Visual / Marching Curriculum	Region Contest Deadline 2A / 4A / 6A	Area Contest Deadline 2A / 4A / 6A; Region Contest Deadline 1A / 3A / 5A	Area Contest Deadline 3A / 5A	State Championships 2A / 4A / 6A; State Military Championships 1A / 2A / 4A
ALL CONFERENCES (unless otherwise denoted)					
Marching Band	September 7, 2020	December 3, 2020	December 10, 2020	December 12, 2020	December 2020, TBD

Personal Protective Equipment (PPE)

- Staff

- All employees will wear approved masks or face shields
 - When entering and exiting buildings
 - In hallways and all common areas – cafeterias, gyms, libraries, etc.
 - There will be more detailed guidance in the REOPENING PLAN
 - In classrooms and all other indoor spaces when students are present
 - More details in REOPENING PLAN

Masks and/or face shields will be supplied to all employees

- Employees may remove masks or face shields when working alone in classrooms or offices
- Hand sanitizer stations will be installed in all classrooms

Personal Protective Equipment (PPE)

- Students
 - All students in Grades 4-12 will wear approved masks or face coverings
 - When entering and exiting buildings
 - In hallways
 - All common areas – cafeterias, gyms, libraries, etc. where social distancing of 3ft or more cannot be achieved (students will not wear a mask when eating
 - There will be more detailed guidance in the REOPENING PLAN
 - In classrooms if 3ft or more social distancing cannot be achieved
 - More details in REOPENING PLAN
 - Students will need to bring their own masks
 - Hand sanitizer station will be installed in all classrooms

Personal Protective Equipment (PPE)

- Buses

- All buses will have sanitizer stations for students when entering and exiting
- All Students will wear masks while in school district buses, vans, etc.
- Windows will be open during transport as long as weather permits

- All of NBISD bus routes are triple tiered, meaning each driver drives three routes in the morning and three routes in the afternoon
- We do not have the ability to social distance on buses
 - Would have to purchase triple the number of buses
 - Very difficult to find drivers even pre-COVID-19

We recommend that parents provide transportation for their own children, when possible.

We will provide transportation to all students who need it.

Screening

- Employees
 - All employees will take their own temperature every morning at home
 - All Employees will do a COVID-19 self screening, electronically each morning before going onto district property
- Parents are required to take student temperatures at home each morning
- Parents are required to COVID-19 symptoms check for each child at home each morning